



Opslag / Note nr.: 1

Område / Area: B + E

Tidspunkt / Time: 22-05-2015

Kl.: 10.00

Ændring af baneområde for Zoom 8 og ændring af baneskitser for bane B og E

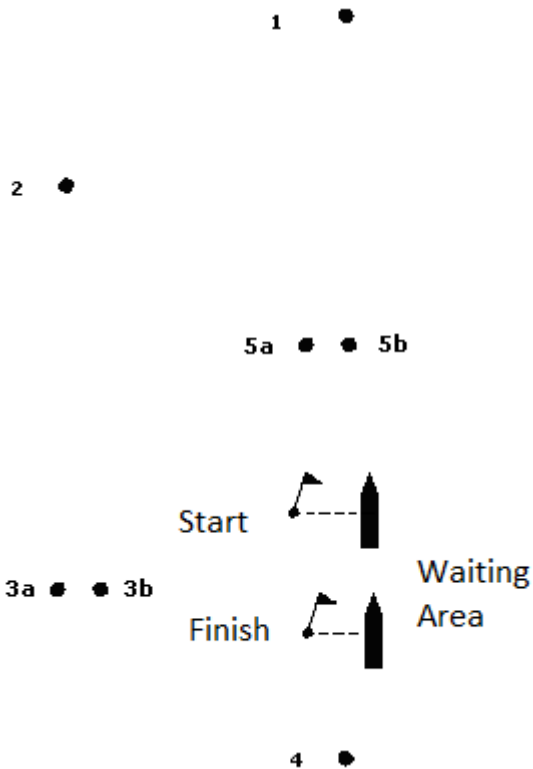
Efter anmodning fra DZA sejler Zoom 8 på bane B i stedet for bane E. Baneskitserne for de to baner samt kort over kapsejladsområderne ændres til vedlagte.

Change of race area for Zoom 8 and change of course configuration for race areas B and E

Following a request from the Danish Zoom 8 Class Association, Zoom 8 will be allocated to race area B in stead of race area E. The course diagrams for the two courses and the map of racing areas will be changed to those attached.

Bilag 1: Baneskitser for race area B og E ændres til:

Race area B – B-optimist, Feva, Zoom 8



Gennemsejling af bane:

Zoom 8: START – 1 – 2 – 3a/3b – 2 – 3b – 4 – FINISH
Feva: START – 1 – 2 – 3a/3b – 2 – 3b – 4 – FINISH
B-optimist: START – 1 – 5a/5b – 1 – 2 – 3b – 4 – FINISH

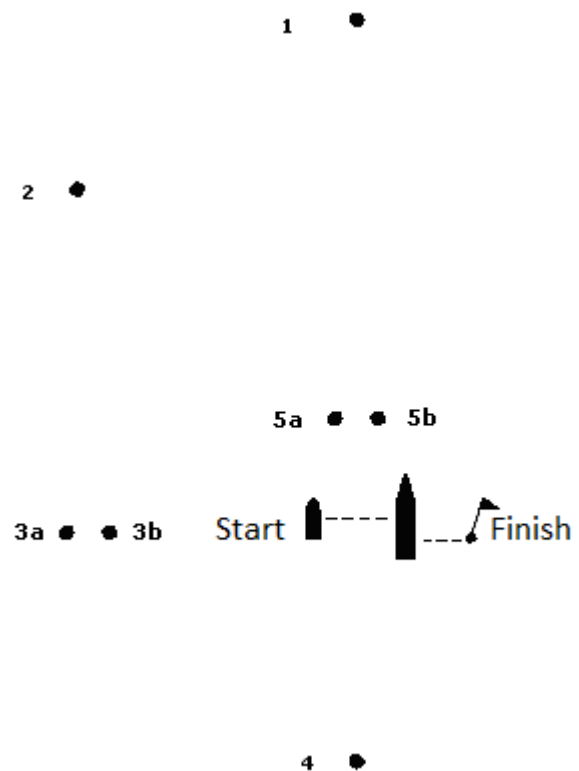
Startlinjemærkerne vil være stangbøje med orange flag og startfartøj.

Mållinjemærkerne vil være stangbøje med blå flag og måltagningsfartøj.

Mærkerne 1, 2, 3a/3b, 4 og 5a/5b vil være gule oppustelige mærker.

Mærke 3a/3b og 5a/5b er gatemærker.

Race area E – Europe, Laser



Gennemsejling af bane:

Outer loop: START – 1 – 2 – 3a/3b – 2 – 3b – 4 – FINISH
Inner loop: START – 1 – 5a/5b – 1 – 2 – 3b – 4 – FINISH

Inner/outer loop signaleres som angivet i pkt. 7.4.

Startlinjemærkerne vil være startfartøj og startlinjebåd.

Mållinjemærkerne vil være stangbøje med blå flag og måltagningsfartøj.

Mærkerne 1, 2, 3a/3b, 4 og 5a/5b vil være orange oppustelige mærker.

Mærke 3a/3b og 5a/5b er gatemærker.

Attachment 1: Course diagrams for race area B and E are changed to:

Race area B – B-optimist, Feva, Zoom 8

The diagram for Race Area B shows a series of marks: 1 (top center), 2 (left), 3a and 3b (left), 4 (bottom center), 5a and 5b (center). A Start line is marked with a flag and a staff buoy, and a Finish line is marked with a flag and a staff buoy. A Waiting Area is indicated between the Start and Finish lines.

Course to sail:

Zoom 8: START – 1 – 2 – 3a/3b – 2 – 3b – 4 – FINISH
Feva: START – 1 – 2 – 3a/3b – 2 – 3b – 4 – FINISH
B-optimist: START – 1 – 5a/5b – 1 – 2 – 3b – 4 – FINISH

The starting marks will be a RC boat and a staff bouy with an orange flag.

The finishing marks will be a staff bouy with a blue flag and the finishing vessel

Marks 1, 2, 3a/3b, 4 and 5a/5b will be yellow cylinders.

Marks 3a/3b and 5a/5b are gate marks.

Race area E – Europe, Laser

The diagram for Race Area E shows a series of marks: 1 (top center), 2 (left), 3a and 3b (left), 4 (bottom center), 5a and 5b (center). A Start line is marked with a flag and a staff buoy, and a Finish line is marked with a flag and a staff buoy. A vessel is shown at the Finish line.

Course to sail:

Outer loop: START – 1 – 2 – 3a/3b – 2 – 3b – 4 – FINISH
Inner loop: START – 1 – 5a/5b – 1 – 2 – 3b – 4 – FINISH

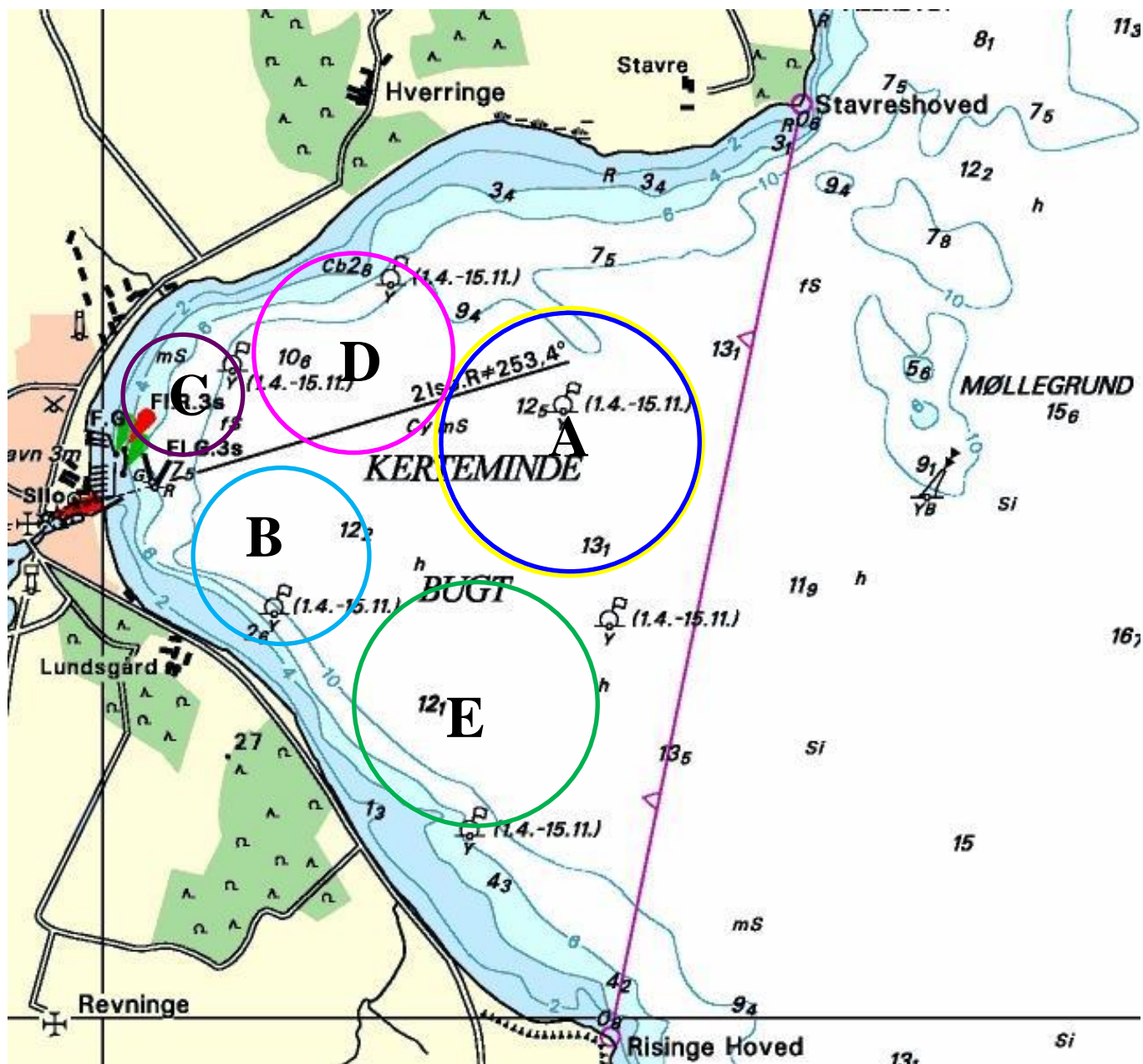
The starting marks will be two RC boats.

The finishing marks will be a staff bouy with a blue flag and the finishing vessel.

Marks 1, 2, 3a/3b, 4 and 5a/5b will be orange cylinders.

Marks 3a/3b and 5a/5b are gate marks.

**Bilag 2: Placering af kapsejldsområder ændres til /
Attachment 2: Locations of race areas are changed to:**



Race Area	Baneflag / course flag	Klasser / Classes
A	Gul, Blå / Yellow, Blue	Optimist A
B	Lyseblå / Light blue	Feva, Optimist B, Zoom 8
C	Lilla / Purple	Optimist C
D	Pink / Pink	29er, A-Cat, Contender, Yngling
E	Grøn / Green	Europe, Laser